

LCRWPG Region K Member Orientation

A G E N D A

“Water Planning 101”



- Introduction to Water Planning 101
- Groundwater and the Rule of Capture
- Groundwater and Water Districts
- Regional Water Suppliers
- Surface Water Law and Permitting
- Environmental Flows
- State and Regional Water Planning Process
- Question to Panel Members

Jim Barho

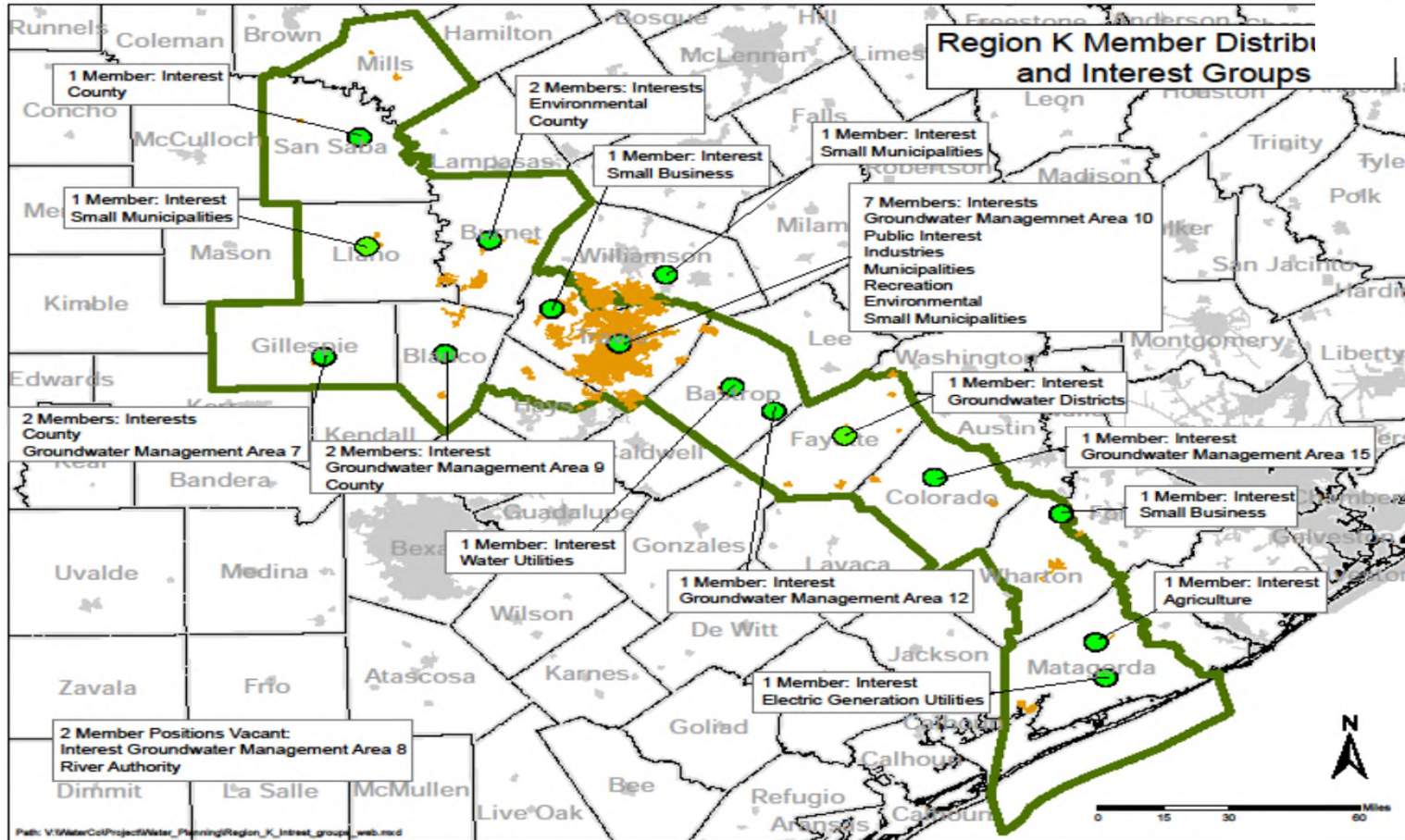
Vice-Chairman, Lower Colorado Regional Planning Group Region K

LCRWPG – Region K



TWDB Designated Regional Water Planning Areas

LCRWPG – Region K



Member Distribution and Interest Groups

LCRWPG – Region K



History

HISTORY OF SB1 AND REGION K WATER PLANS

[Senate Bill 1](#)

In June 1997, Governor George W. Bush signed into law Senate Bill 1 (SB1) creating the regional water planning process. The bill was codified in the Texas Water Code, Chapter 16 and [31 TAC Chapters 355, 357 and 358](#) related to regional water planning groups. The Texas Water Development Board (TWDB) is the lead state agency for coordinating the regional water planning process and developing a comprehensive state water plan. TWDB established planning guidelines and planning areas and appointed the original planning group members for all 16 regions. Each planning area functions on its own with continuous guidance from the TWDB.

History of Region K Water Planning Group?

LCRWPG – Region K



What is the Region K Water Planning Group?

The Lower Colorado River Water Planning Group (LCRWPG) is one of 16 regional water planning groups established by the Texas Water Development Board to help develop and revise a comprehensive [water plan](#) for Texas through 2060. The LCRWPG is made up of different members representing various interest groups, who are responsible for developing and refining the long-range water plan for the Central Texas region. The LCRWPG has completed three five-year planning cycles and is now completing the fourth round of Regional Water Planning (2011-2016). The objective of the planning group is to develop and refine a balanced, long-range plan, which will be included in the [State Water Plan](#) that will meet the region's water needs over the next 50 years.

What is the Region K Water Planning Group?

LCRWPG – Region K

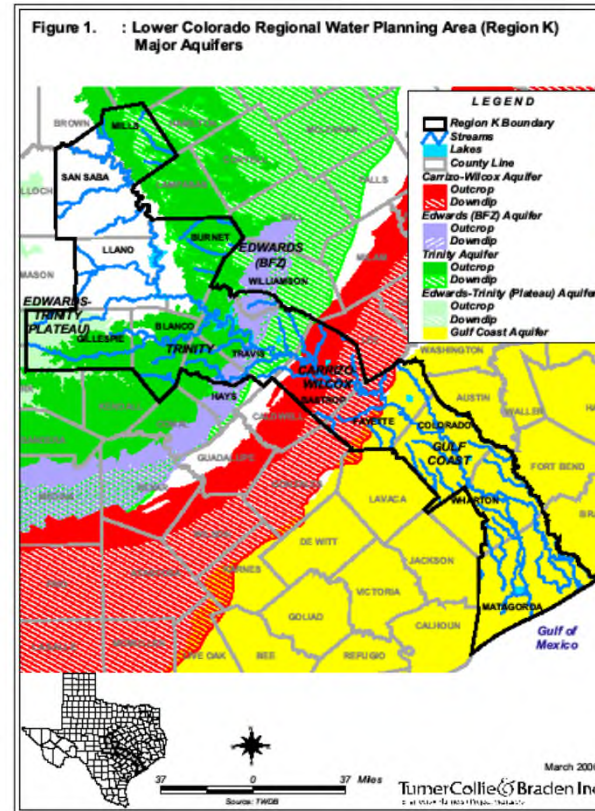


Where is Region K?

The Lower Colorado Regional Water Planning Area is composed of all or parts of 14 counties, stretching from Mills County in the Hill Country southeast to the Gulf Coast. Counties include San Saba, Burnet, Llano, Mills, Blanco, Gillespie, Hays (partial), Williamson (partial), Travis, Bastrop, Fayette, Wharton (partial), Colorado, and Matagorda. Most of the region lies in the Colorado River Basin. Cities in the region include Austin, Bay City, Pflugerville, and Fredericksburg.

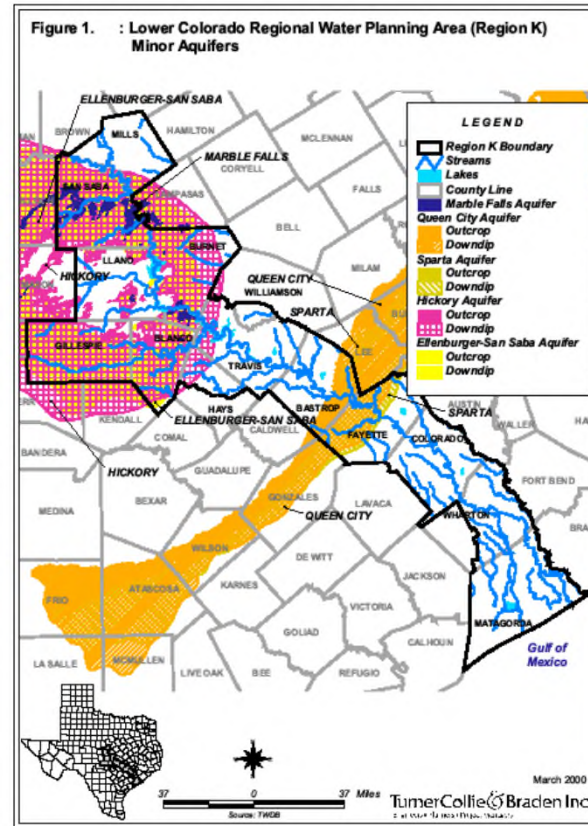
Where is the Region K?

LCRWPG – Region K



Minor Aquifers in Region K

LCRWPG – Region K



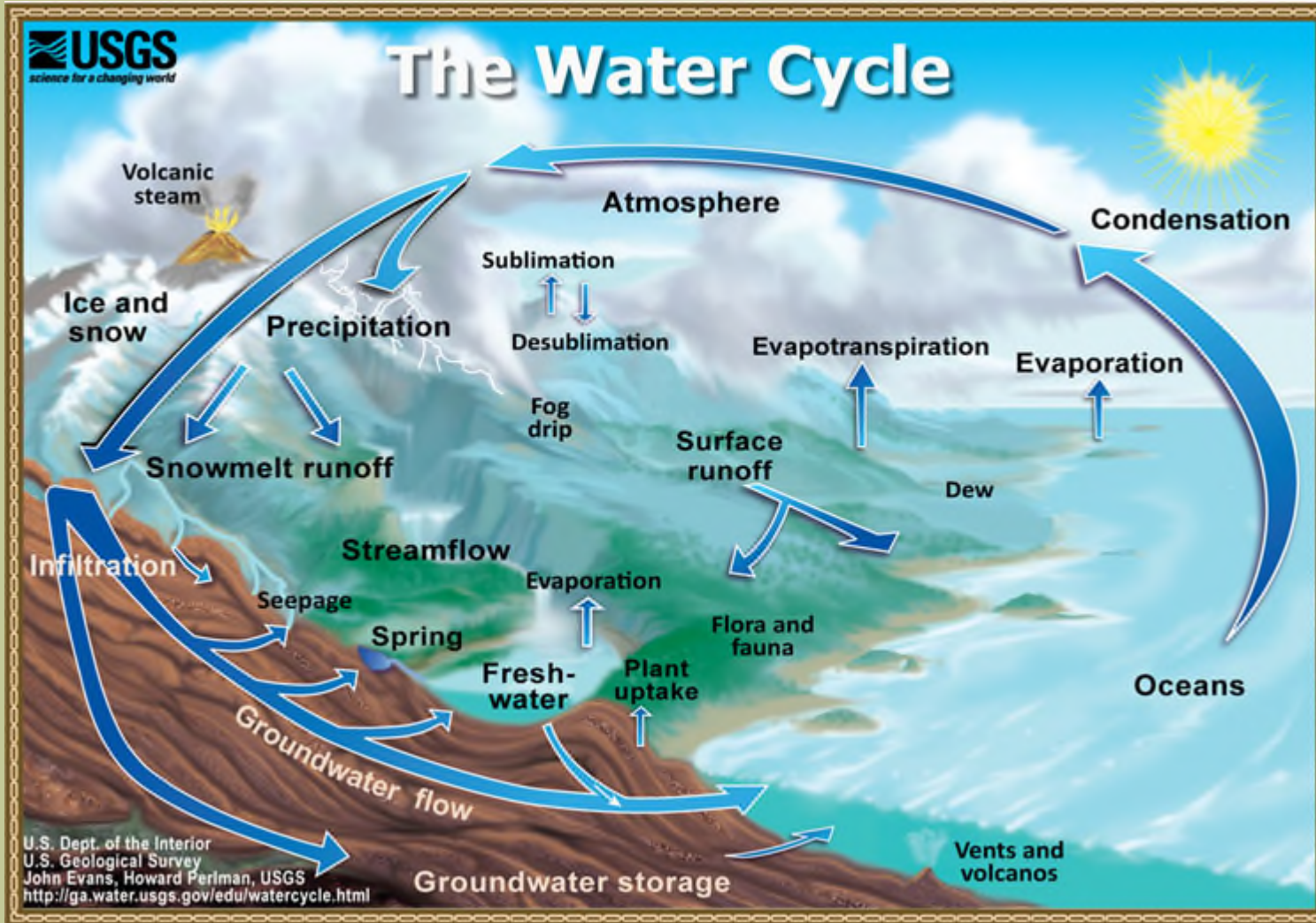
Minor Aquifers in Region K

LCRWPG – Region K



TWDB Designated Regional Water Planning Areas

LCRWPG – Region K



The Water Cycle

YOUR Responsibilities



- Attend ALL Region K Meetings
- Volunteer & Participate on Sub-Committees
- Read Distributed Materials from Consultants
- Understand the Planning Process, Schedule, & Deadlines
- Keep Discussion in Meetings to Agenda Items
- Represent Your Official Interest Group
- Be Considerate of ALL Regional Needs & Interest Groups
- Support the BEST Solution for the Region

“It is YOUR Responsibility to Educate Yourself”



Questions



WHAT IS OUR NEXT STEP?