

May 23, 2022

Population and Water Demand Committee Meeting



1

Agenda Item 3

Draft WUG list, GPCD, historical population and water use



2

Agenda Item 3a

Review TWDB data release and related deadlines



3

Agenda Item 3a

Review TWDB data release and related deadlines



• What is a municipal Water User Group (WUG)?

- Automatic**
 - Retail public utility providing over 100 ac-ft/yr
 - Owned by political subdivision
- Private, State, or Federal**
 - Provides over 100 ac-ft/yr
 - Requested by the RWPG or the entity
- Collective Reporting Unit**
 - Aggregations of related systems like Regional Water Authorities
 - Requested by the RWPG or the entity
- County-Other**
 - Everyone else

4

Agenda Item 3a

Review TWDB data release and related deadlines



- TWDB March 2022 Data Release
 - Proposed 2027 State Water Plan (SWP) WUG list
 - 2022 and 2022 SWP names
 - Public Water Supply (PWS) water usage data
 - Only WUGs that list their **primary region** as Region K
- Our mission?
 - Assess new, added, or modified WUGs
 - Provide recommendations prior to TWDB population/demand projection
 - Revisions due to TWDB by **July 29, 2022**
- In the future (Feb 2023)
 - These WUGs will come back to us later with projected population and demands

5

Agenda Item 3a

Review TWDB data release and related deadlines



Requirement for adjustment to municipal WUG list:

- Evidence of errors identified in the historical water use for a public water system or utility, which would determine whether the system or utility met the water user group definition.
- Evidence of errors in the ownership type of a public water system or utility provided in the Texas Drinking Water Watch.
- Evidence of recent changes of the ownership of a public water system or utility through merge[r] or annexation.

6

Agenda Item 3a

Review TWDB data release and related deadlines



New WUGs

Modified WUGs

WUGs Primarily in Other Regions

7

New WUGs in 2027



8

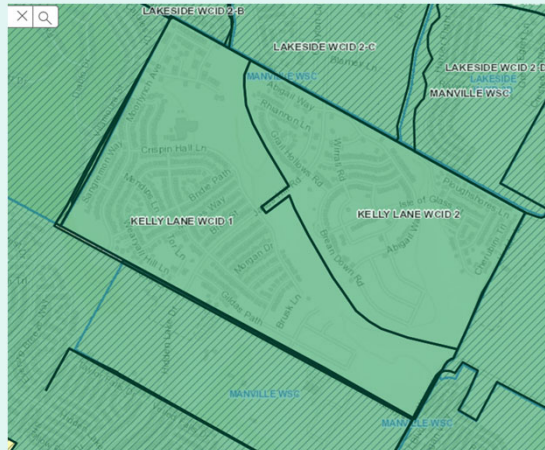
Agenda Item 3a

Review TWDB data release and related deadlines New WUGs



Kelly Lane WCID 2

- Near Pflugerville
- Kelly Lane WCID 1 is an existing WUG
- Purchases GW from Manville WSC
- 2019 water use ~190 ac-ft/yr (from water use survey)



9

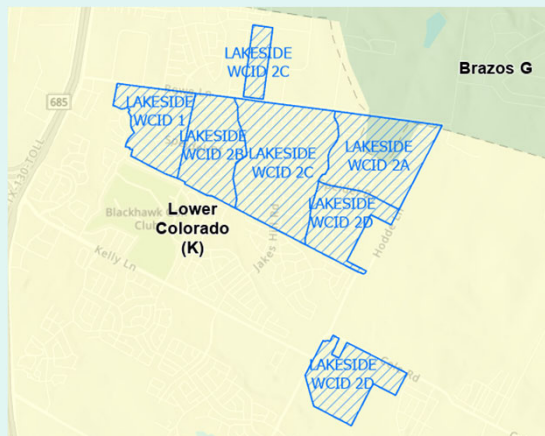
Agenda Item 3a

Review TWDB data release and related deadlines New WUGs



Lakeside WCID 1, 2-B, 2-C and 2-D

- Near the same area as Kelly Lane WCID 1 and 2
- Recent use is around 200-500 ac-ft/yr
- All were previously in County-Other, Travis
- Lakeside WCID 2-A used 95 ac-ft/yr in 2019 (still included in County-other, Travis for Region K)



10

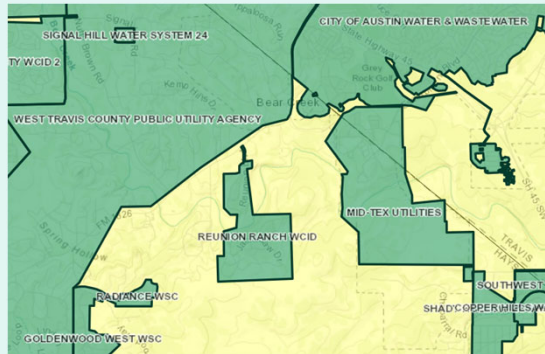
Agenda Item 3a

Review TWDB data release and related deadlines New WUGs



Mid-Tex Utilities and Reunion Ranch WCID

- Southwest of Austin
- Water use in 2020:
 - Mid-Tex: 245 ac-ft/yr
 - Reunion Ranch: 320 ac-ft/yr
- Previously below 100 ac-ft/yr



11

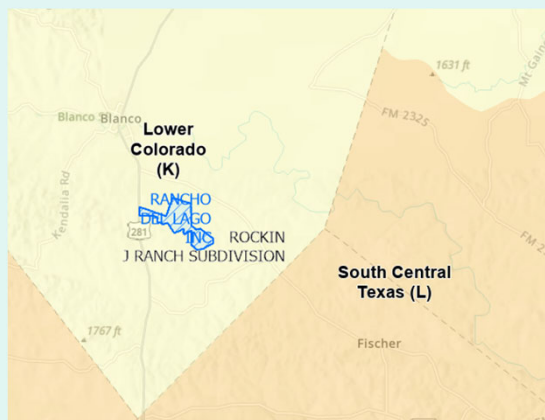
Agenda Item 3a

Review TWDB data release and related deadlines New WUGs



Rancho Del Lago

- Also called Rockin' J Ranch Subdivision
- Previously in County-Other
- 2020 water use: 200 ac-ft/yr



12

Agenda Item 3a

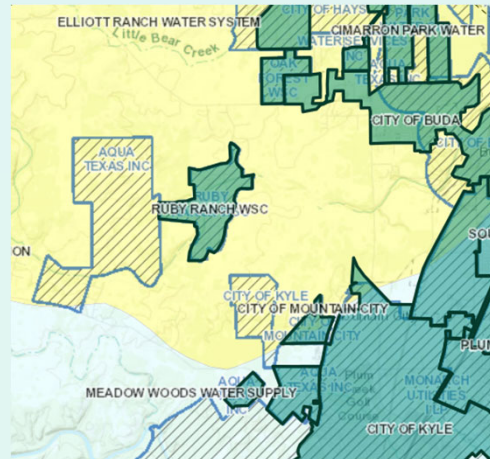
Review TWDB data release and related deadlines

New WUGs



Ruby Ranch WSC

- Northwest of Kyle
- 2020 water use: 114 ac-ft/yr
- Previously included in County-Other



13

Agenda Item 3a

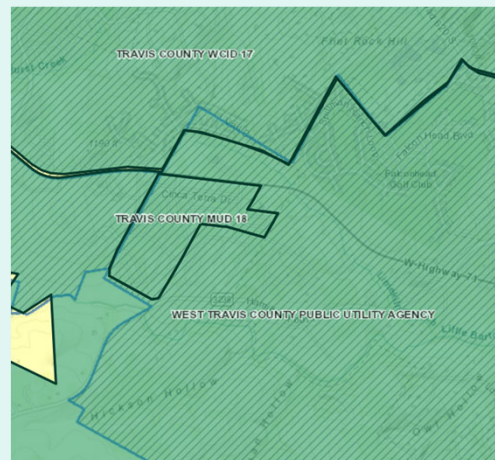
Review TWDB data release and related deadlines

New WUGs



Travis County MUD 18

- Previously in County-Other.
- 2020 water use: 204 ac-ft/yr



14

Modified WUGs



15

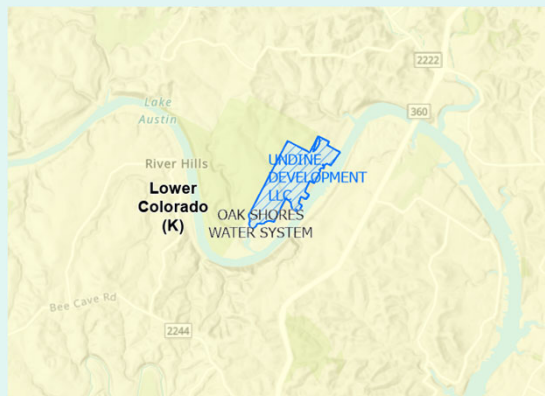
Agenda Item 3a

Review TWDB data release and related deadlines Modified WUGs



Undine Development LLC – Previously Oak Shores Water System

- Located on Lake Austin
- Also formerly called “PK/RE Development Co”
- Water use around 100-180 ac-ft/yr since 2010



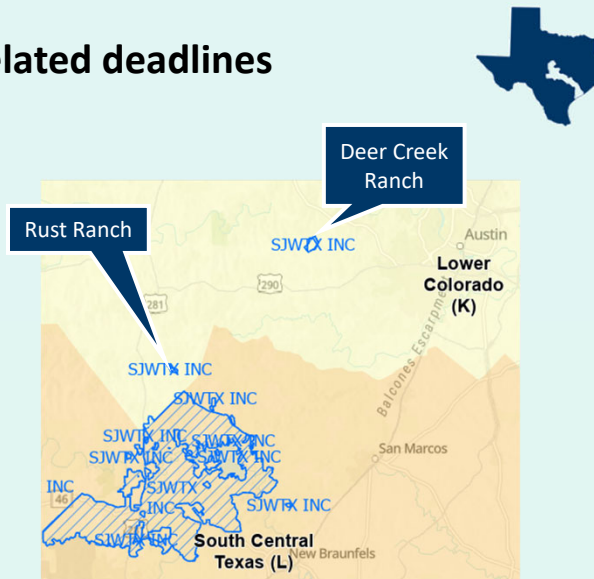
16

Agenda Item 3a

Review TWDB data release and related deadlines Modified WUGs

SJWTX – Previously Deer Creek Ranch Water and Canyon Lake Water Service

- Rust Ranch used ~40 ac-ft/yr in 2020 (Part of Canyon Lake Water Service Co in previous plan)
- Deer Creek Ranch Water System used ~200 ac-ft/yr in 2020



17

WUGs primarily in another region



18

Agenda Item 3a

Review TWDB data release and related deadlines WUGs Primarily in Another Region



Lee County WSC (Brazos G)

- 2022 State Water Plan Total demand: 1,268-1,850 ac-ft/yr
- Region K Demand: 309-723 ac-ft/yr



19

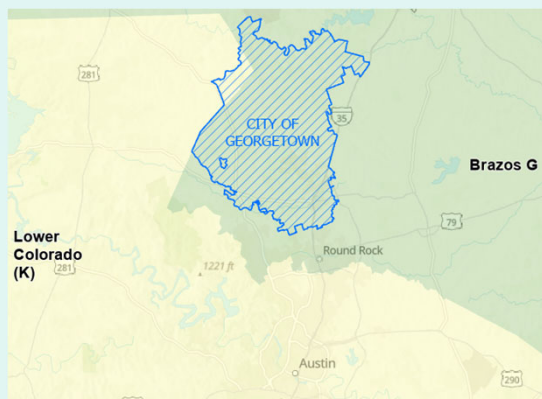
Agenda Item 3a

Review TWDB data release and related deadlines WUGs Primarily in Another Region



Georgetown (Brazos G)

- 2022 State Water Plan total demand: 26,851-78,762 ac-ft/yr
- Region K demand: 84-150 ac-ft/yr



20

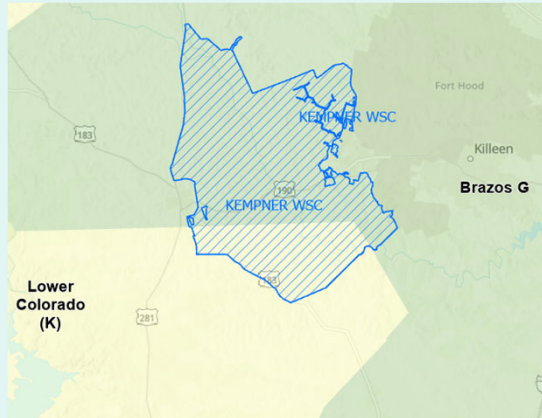
Agenda Item 3a

Review TWDB data release and related deadlines WUGs Primarily in Another Region



Kempner WSC (Brazos G)

- 2022 State Water Plan Total demand: 2,751-3,873 ac-ft/yr
- Region K demand: 132-196 ac-ft/yr



21

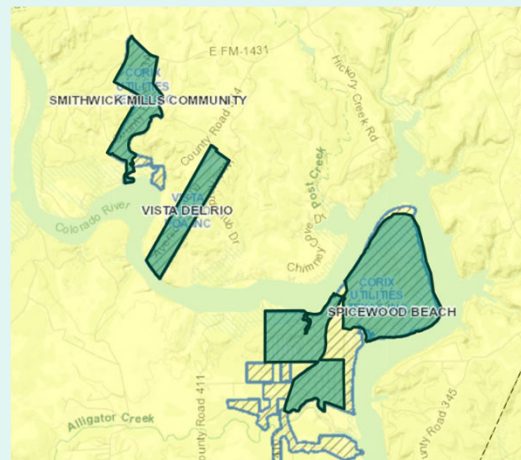
Agenda Item 3a

Review TWDB data release and related deadlines WUGs Primarily in Another Region



Corix utilities Texas Inc (Brazos G)

- Corix owns around 10 small water systems around the Highland Lakes area and downstream near Columbus.
- The largest service areas are located within Region G
- 2022 State Water Plan projections: 1,315-1,565 ac-ft/yr total and 390-491 ac-ft/yr for Region K



22

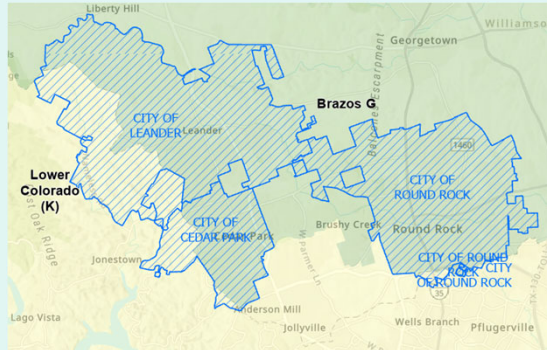
Agenda Item 3a

Review TWDB data release and related deadlines WUGs Primarily in Another Region



Cedar Park, Leander, and Round Rock (Brazos G)

- 2022 State Water Plan total projections
 - Cedar Park: 19,108-20,980 ac-ft/yr
 - Leander: 8,081-28,722 ac-ft/yr
 - Round Rock: 20,082-37,623 ac-ft/yr
- 2022 SWP Region K demand
 - Cedar Park: 2,251-2,546 ac-ft/yr
 - Leander: 1,519-4,222 ac-ft/yr
 - Round Rock: 278-470 ac-ft/yr



23

Agenda Item 3a

Review TWDB data release and related deadlines WUGs Primarily in Another Region



Williamson County WSID 3 and Williamson Travis Counties MUD 1 (Brazos G)

- 2022 SWP projections:
 - Wil. Co. WSID 3: total demand ~1,100 ac-ft/yr and Region K demand ~140 ac-ft/yr
 - Wil. Trav. Co. MUD 1: total demand ~700 ac-ft/yr and Region K demand ~140 ac-ft/yr



24

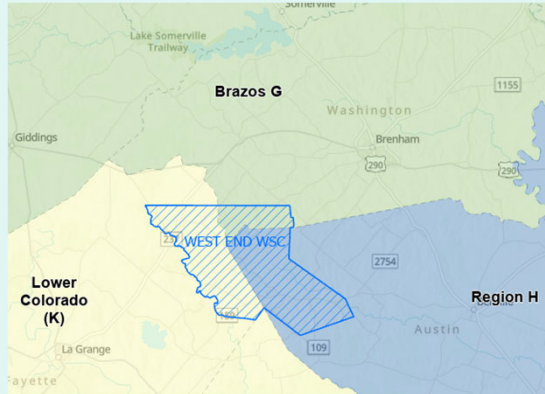
Agenda Item 3a

Review TWDB data release and related deadlines WUGs Primarily in Another Region



West End WSC (Region H)

- 2022 State Water Plan total demand: 382-591 ac-ft/yr
- Region K Demand: 130-201 ac-ft/yr



25

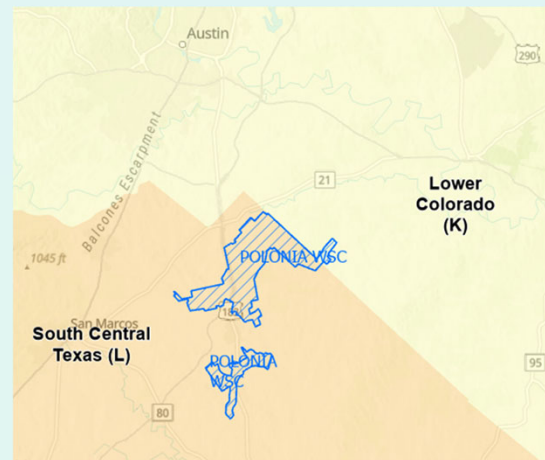
Agenda Item 3a

Review TWDB data release and related deadlines WUGs Primarily in Another Region



Polonia WSC (South Central Texas)

- 2022 State Water Plan total demand: 919-1,855 ac-ft/yr
- Region K Demand: 29-100 ac-ft/yr



26

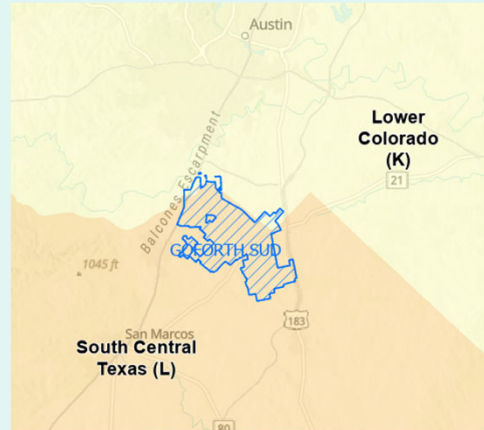
Agenda Item 3a

Review TWDB data release and related deadlines WUGs Primarily in Another Region



Goforth SUD (South Central Texas)

- 2022 State Water Plan total demand: 2,813-9,572 ac-ft/yr
- Region K Demand: 163-515 ac-ft/yr



27

Agenda Item 3a

Review TWDB data release and related deadlines WUGs Primarily in Another Region



Brookesmith SUD (Region F)

- 2022 State Water Plan total demand: 1,212-1,167 ac-ft/yr
- Region K Demand: 7-8 ac-ft/yr



28

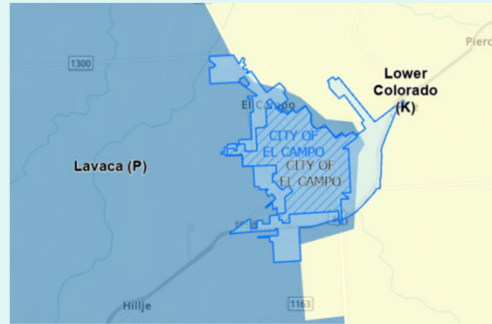
Agenda Item 3a

**Review TWDB data release and related deadlines
WUGs Primarily in Another Region**



El Campo (Lavaca)

- 2022 State Water Plan total demand: 2,291-2,539 ac-ft/yr
- Region K Demand: 5-6 ac-ft/yr



29

Agenda Item 3a

**Review TWDB data release and related deadlines
WUGs Primarily in Another Region**



**County-Other - Williamson
(Brazos G)**

- 2022 State Water Plan total demand : 6,156-44,121 ac-ft/yr
- Region K Demand: 67-93 ac-ft/yr

Utilities in 2022:
NOACK WSC (Individual WUG for Region G in 2027)
CITY OF THRALL
FOSTER CONSOLIDATED
AQUA UTILITIES
HIGH GABRIEL WSC
BLESSING MHP
DURHAM PARK WSC
AQUA TEXAS INC-SAN GABRIEL RIVER RANCHES
AQUA TEXAS INC-TAL/TEX INC
MEADOWCREST MHP
ROUND ROCK RANCH PUD UTILITY
LIBERTY GREENLINE

30

Agenda Item 3b

Consider requests for revisions and recommendations to RWPG, as needed



31

Agenda Item 4

Draft Livestock, Manufacturing, and Steam Electric Demand Projections



32

Agenda Item 4a

Review TWDB data release and related deadlines



33

Agenda Item 4a

Review TWDB data release and related deadlines



- TWDB January 2022 Data Release
- Our mission
 - Initial review of draft demand projections for Livestock, Manufacturing, Steam-Electric
 - Provide recommendations for revisions due to TWDB by **July 2023**
- In the future
 - Mining and Irrigation draft demand projections coming Sept 2022
 - Provide recommendations for revisions due to TWDB by **July 2023**

34

Agenda Item 4a

Review TWDB data release and related deadlines



Non-Municipal Water Demand Projections and Methodologies

- Source: 2026 RWP Projections Methodology Overview Presentation
- by Katie Dahlberg of TWDB at January 26th Chairs Conference Call
- <https://www.twdb.texas.gov/waterplanning/rwp/planningdocu/2026/chairsconfcalls.asp>

Dates

- Historical: 2015 – 2019
- Projections: 2030 – 2080

35

Agenda Item 4a

Review TWDB data release and related deadlines



Livestock

Manufacturing

Steam Electric

36

Livestock

- Same methodology as 2021 RWP
- Baseline = 5-year average (2015-2019)
 - County water use estimates, based on USDA inventory * water use coefficients
 - Water use survey facilities
- Follows same projection trend as 2021 RWP
 - 2070 – 2080 held constant
- Draft projections released in January 2022

www.twdb.texas.gov

www.facebook.com/twdboard

[@twdb](https://twitter.com/twdb)

https://www.twdb.texas.gov/waterplanning/rwp/planningdocu/2026/chaircalls/20220126/2026RWP_Projections_Overview_ChairsConfCall.pdf

37

Livestock Water Use Coefficients

TWDB Category	USDA Data Type	2026 RWP Water Use (gallons/head/day)	2021 RWP Water Use (gallons/head/day)
Cattle	Milk	55	75
	Fed & Other Cattle	15	15
Chickens	Layers	0.09	0.086
	Pullets, Replacement		
	Roosters	0.09	0.077
	Broilers		
Equine	Horses & Ponies	12	12
	Mules, Burros, & Donkeys		
Hogs	Hogs	5	11
Sheep	Sheep	2	2
Goats	Milk	2	0.5
	Meat & Other		
	Angora		
Turkeys	Turkeys	0.2	0.2

www.twdb.texas.gov

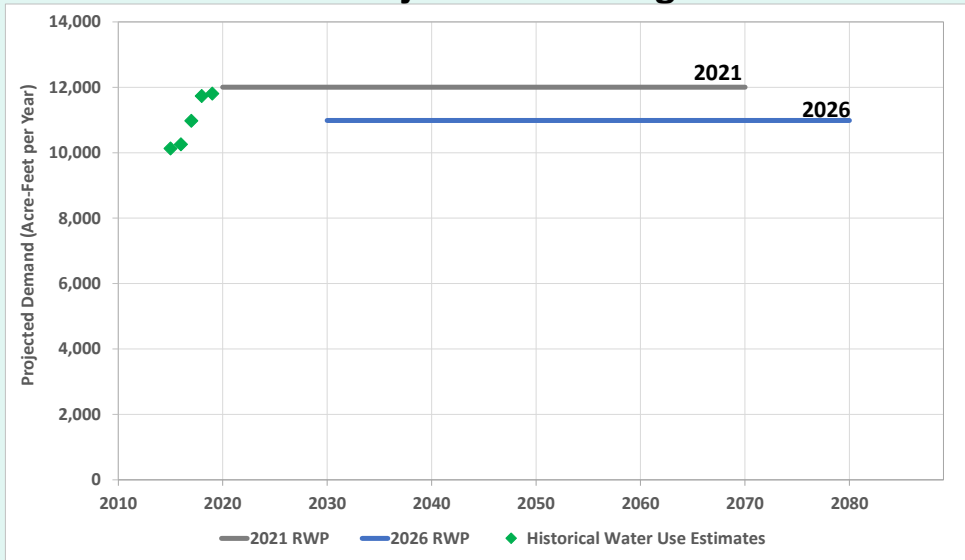
www.facebook.com/twdboard

[@twdb](https://twitter.com/twdb)

https://www.twdb.texas.gov/waterplanning/rwp/planningdocu/2026/chaircalls/20220126/2026RWP_Projections_Overview_ChairsConfCall.pdf

38

Draft Livestock Demand Projections for Region K

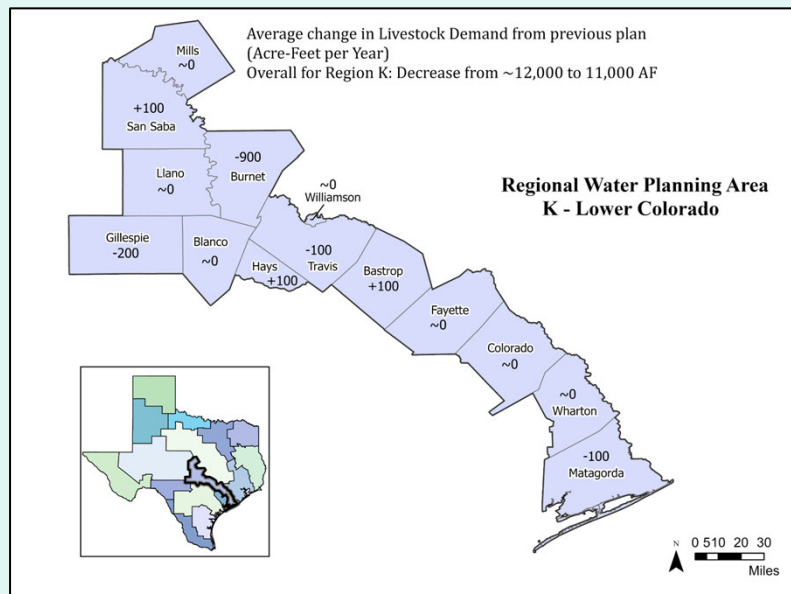


<https://www.twdb.texas.gov/waterplanning/data/projections/2027/projections.asp>



39

Draft Livestock Demand Projections for Region K – Changes from 2021 to 2026 RWPs



40

Draft Livestock Demand Projections for Region K

Region	County	Historical Water Use Estimates					2021 Regional Water Plan Projections						2026 DRAFT Regional Water Plan Projections						
		2015	2016	2017	2018	2019	2020	2030	2040	2050	2060	2070	2030	2040	2050	2060	2070	2080	
K	BASTROP	1,052	1,074	1,346	1,390	1,390	1,135	1,135	1,135	1,135	1,135	1,135	1,250	1,250	1,250	1,250	1,250	1,250	1,250
K	BLANCO	308	311	376	388	390	331	331	331	331	331	331	355	355	355	355	355	355	355
K	BURNET	634	576	611	1,048	1,106	1,691	1,691	1,691	1,691	1,691	1,691	795	795	795	795	795	795	795
K	COLORADO	1,187	1,218	1,298	1,344	1,347	1,276	1,276	1,276	1,276	1,276	1,276	1,279	1,279	1,279	1,279	1,279	1,279	1,279
K	FAYETTE	1,649	1,695	1,673	1,723	1,723	1,726	1,726	1,726	1,726	1,726	1,726	1,693	1,693	1,693	1,693	1,693	1,693	1,693
K	GILLESPIE	834	858	1,088	1,114	1,114	1,212	1,212	1,212	1,212	1,212	1,212	1,002	1,002	1,002	1,002	1,002	1,002	1,002
K	HAYS	124	124	107	112	112	17	17	17	17	17	17	116	116	116	116	116	116	116
K	LLANO	610	615	626	644	644	580	580	580	580	580	580	628	628	628	628	628	628	628
K	MATAGORDA	971	982	922	959	959	1,075	1,075	1,075	1,075	1,075	1,075	959	959	959	959	959	959	959
K	MILLS	785	802	824	845	853	863	863	863	863	863	863	822	822	822	822	822	822	822
K	SAN SABA	751	764	967	992	992	779	779	779	779	779	779	893	893	893	893	893	893	893
K	TRAVIS	414	417	380	395	395	527	527	527	527	527	527	400	400	400	400	400	400	400
K	WHARTON	799	811	749	770	770	792	792	792	792	792	792	780	780	780	780	780	780	780
K	WILLIAMSON	16	16	16	17	17	0	0	0	0	0	0	16	16	16	16	16	16	16
Region Total		10,134	10,263	10,983	11,741	11,812	12,004	12,004	12,004	12,004	12,004	12,004	10,988	10,988	10,988	10,988	10,988	10,988	10,988

<https://www.twdb.texas.gov/waterplanning/data/projections/2027/projections.asp>



41

Manufacturing

Baseline = highest county water use (2015-2019) + unaccounted water use estimates

- Historical water use survey
- U.S. Census Bureau County Business Patterns (CBP) historical number of establishments

Water Sources: fresh and brackish groundwater, fresh surface water, reuse

- Total intake

Draft projections released in January 2022

www.twdb.texas.gov www.facebook.com/twdbboard [@twdb](https://twitter.com/twdb)

Texas Water Development Board



https://www.twdb.texas.gov/waterplanning/rwp/planningdocu/2026/chaircalls/20220126/2026RWP_Projections_Overview_ChairsConfCall.pdf

42

Manufacturing

Baseline * 2010-2019 historical water use survey rate of change = 2030

CBP 2010-2019 historical number of establishments rate of change used to project each decade 2040-2080

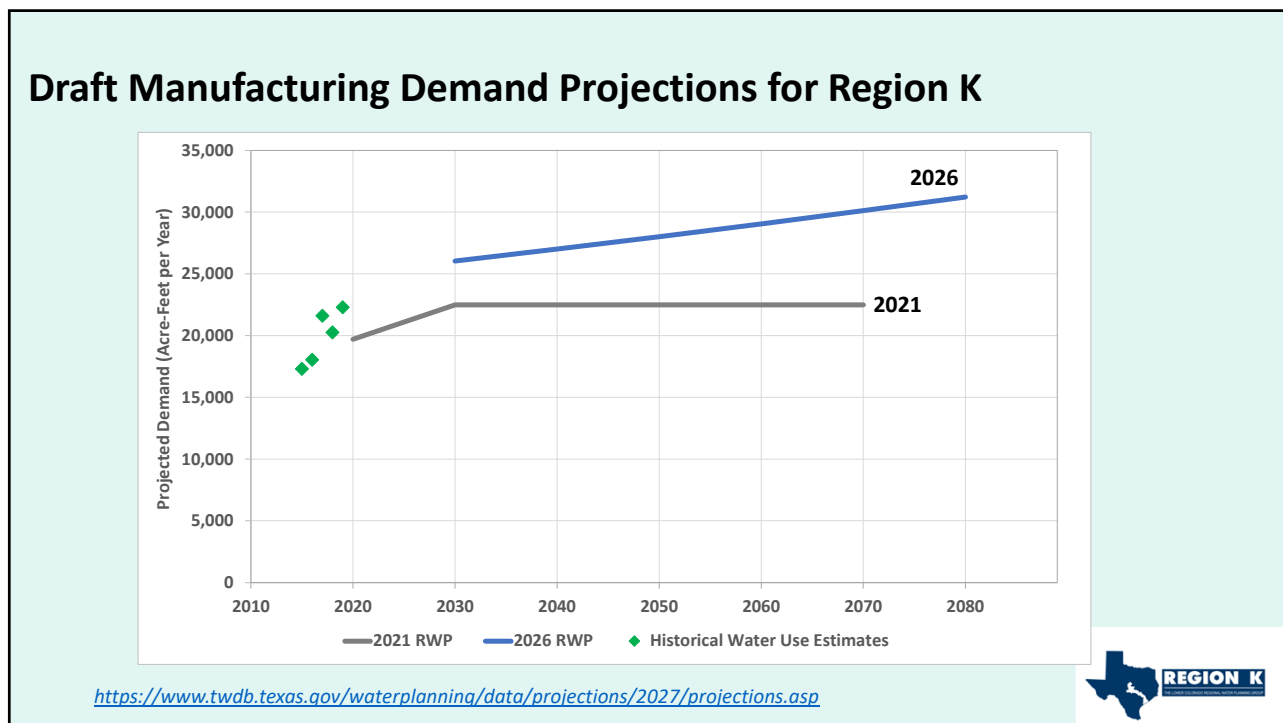
www.twdb.texas.gov

www.facebook.com/twdbboard

[@twdb](https://twitter.com/twdb)

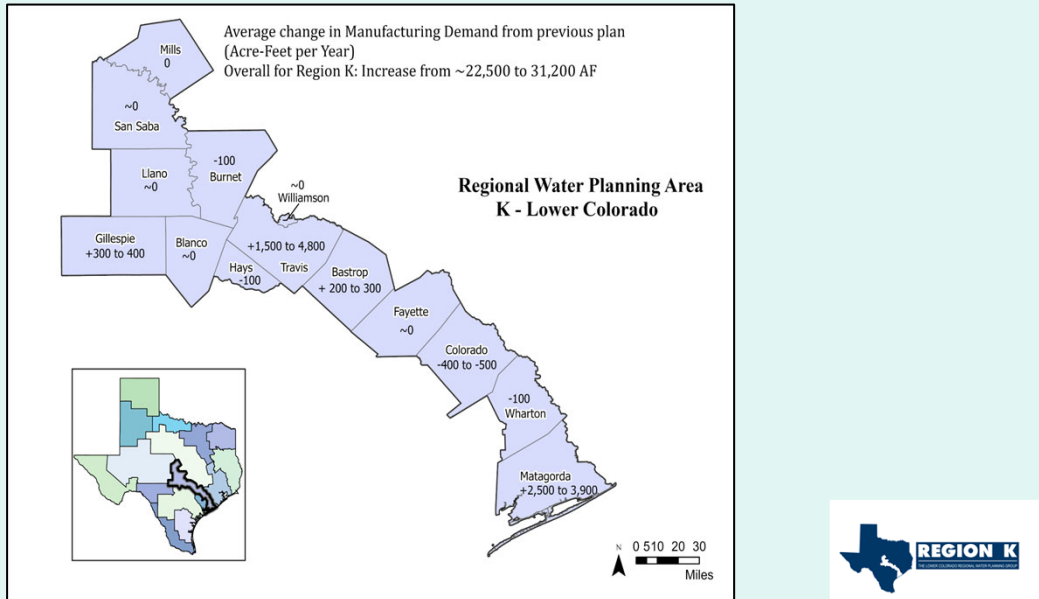
https://www.twdb.texas.gov/waterplanning/rwp/planningdocu/2026/chaircalls/20220126/2026RWP_Projections_Overview_ChairsConfCall.pdf

43



44

Draft Manufacturing Demand Projections for Region K – Changes from 2021 to 2026 RWPs



45

Draft Manufacturing Demand Projections for Region K

Region	County	Historical Water Use Estimates					2021 Regional Water Plan Projections					2026 DRAFT Regional Water Plan Projections						
		2015	2016	2017	2018	2019	2020	2030	2040	2050	2060	2070	2030	2040	2050	2060	2070	2080
K	BASTROP	99	71	167	245	350	188	215	215	215	215	215	414	429	445	461	478	496
K	BLANCO	0	0	0	0	0	0	0	0	0	0	0	16	17	18	19	20	21
K	BURNET	137	101	105	71	92	251	299	299	299	299	299	156	162	168	174	180	187
K	COLORADO	532	539	500	513	509	960	1,132	1,132	1,132	1,132	1,132	593	615	638	662	686	711
K	FAYETTE	363	318	277	259	311	396	442	442	442	442	399	414	429	445	461	478	496
K	GILLESPIE	19	25	321	314	314	77	93	93	93	93	388	402	417	432	448	465	482
K	HAYS	134	106	119	119	131	277	324	324	324	324	181	188	195	202	209	217	224
K	LLANO	3	1	2	2	2	3	4	4	4	4	3	3	3	3	3	3	3
K	MATAGORDA	3,954	4,392	5,464	4,740	6,688	4,199	4,916	4,916	4,916	4,916	7,378	7,651	7,934	8,228	8,532	8,848	9,174
K	MILLS	2	1	1	1	1	2	2	2	2	2	2	2	2	2	2	2	2
K	SAN SABA	5	5	5	4	17	10	12	12	12	12	19	20	21	22	23	24	25
K	TRAVIS	12,002	12,424	14,576	13,918	13,816	13,164	14,853	14,853	14,853	14,853	16,401	17,008	17,637	18,290	18,967	19,669	20,396
K	WHARTON	49	51	57	60	59	156	171	171	171	171	79	82	85	88	91	94	97
K	WILLIAMSON	10	12	13	13	8	25	30	30	30	30	14	15	16	17	18	19	20
Region Total		17,309	18,046	21,607	20,259	22,298	19,708	22,493	22,493	22,493	22,493	26,043	27,008	28,008	29,045	30,118	31,234	32,387

<https://www.twdb.texas.gov/waterplanning/data/projections/2027/projections.asp>

46



Steam-Electric Power



Baseline = highest county water use (2015-2019) + estimated water use for non-responses and proposed plants

- Historical water use survey
- U.S. Energy Information Administration 860 form – NAICS: 22

If a facility retires before 2020, then the water use is removed from the projections

If RWPGs requested to remove a facility in the previous plan, then facility was removed in the 2026 draft projections

www.twdb.texas.gov
 www.facebook.com/twdbboard
 @twdb

https://www.twdb.texas.gov/waterplanning/rwp/planningdocu/2026/chaircalls/20220126/2026RWP_Projections_Overview_ChairsConfCall.pdf

47

Steam-Electric Power



Water sources: fresh and brackish groundwater, fresh surface water, reuse



- Consumptive use

2030 – 2080 held constant

Same methodology as the 2021 RWPs

Draft projections released in January 2022

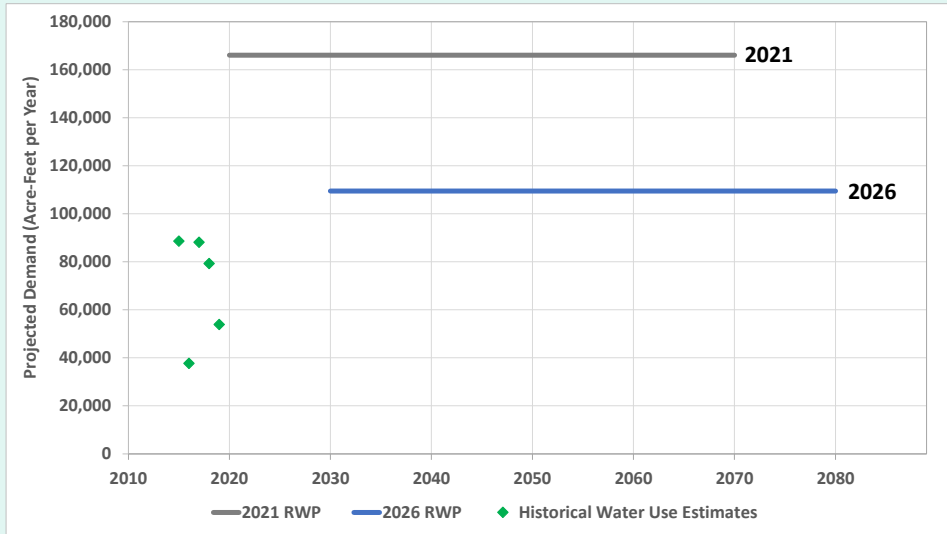
www.twdb.texas.gov
 www.facebook.com/twdbboard
 @twdb

https://www.twdb.texas.gov/waterplanning/rwp/planningdocu/2026/chaircalls/20220126/2026RWP_Projections_Overview_ChairsConfCall.pdf

48

Draft Steam-Electric Demand Projections for Region K

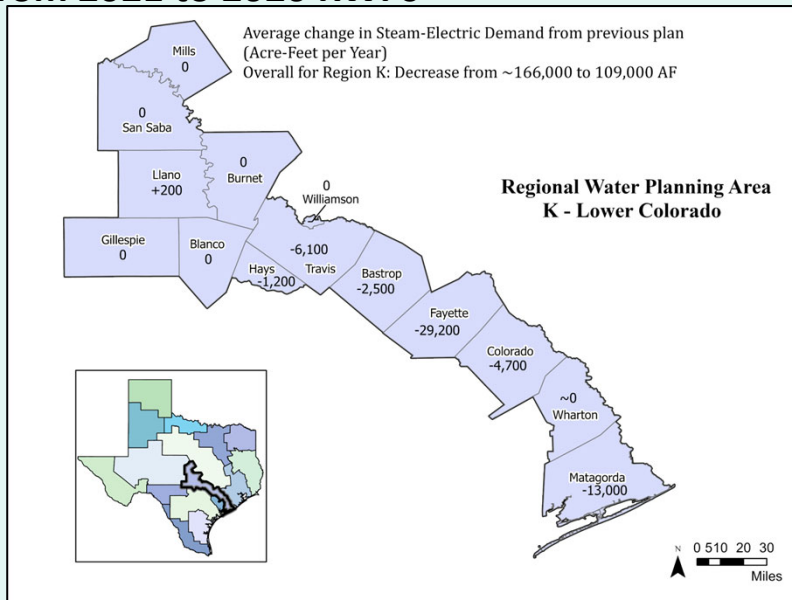


<https://www.twdb.texas.gov/waterplanning/data/projections/2027/projections.asp>



49

Draft Steam-Electric Demand Projections for Region K – Changes from 2021 to 2026 RWPs



50

Draft Steam-Electric Demand Projections for Region K

Region	County	Historical Water Use Estimates					2021 Regional Water Plan Projections						2026 DRAFT Regional Water Plan Projections					
		2015	2016	2017	2018	2019	2020	2030	2040	2050	2060	2070	2030	2040	2050	2060	2070	2080
K	BASTROP	7,764	5,844	6,905	7,118	7,319	10,288	10,288	10,288	10,288	10,288	10,288	7,764	7,764	7,764	7,764	7,764	7,764
K	BLANCO	0	0	0	0	0	0	0	0	0	0	0	0	0	0	0	0	0
K	BURNET	0	0	0	0	0	0	0	0	0	0	0	0	0	0	0	0	0
K	COLORADO	0	0	0	0	0	4,971	4,971	4,971	4,971	4,971	4,971	226	226	226	226	226	226
K	FAYETTE	9,338	8,494	18,575	20,052	14,023	49,211	49,211	49,211	49,211	49,211	49,211	20,052	20,052	20,052	20,052	20,052	20,052
K	GILLESPIE	0	0	0	0	0	0	0	0	0	0	0	0	0	0	0	0	0
K	HAYS	0	0	0	0	0	1,187	1,187	1,187	1,187	1,187	1,187	0	0	0	0	0	0
K	LLANO	1,733	1,927	1,762	1,446	1,054	1,748	1,748	1,748	1,748	1,748	1,748	1,927	1,927	1,927	1,927	1,927	1,927
K	MATAGORDA	67,453	16,715	57,068	46,278	25,134	80,536	80,536	80,536	80,536	80,536	80,536	67,453	67,453	67,453	67,453	67,453	67,453
K	MILLS	0	0	0	0	0	0	0	0	0	0	0	0	0	0	0	0	0
K	SAN SABA	0	0	0	0	0	0	0	0	0	0	0	0	0	0	0	0	0
K	TRAVIS	2,321	2,208	2,103	2,680	4,116	10,253	10,253	10,253	10,253	10,253	10,253	4,116	4,116	4,116	4,116	4,116	4,116
K	WHARTON	3	2,449	1,687	1,696	2,217	7,901	7,901	7,901	7,901	7,901	7,901	7,913	7,913	7,913	7,913	7,913	7,913
K	WILLIAMSON	0	0	0	0	0	0	0	0	0	0	0	0	0	0	0	0	0
Region Total		88,612	37,637	88,100	79,270	53,863	166,095	166,095	166,095	166,095	166,095	166,095	109,451	109,451	109,451	109,451	109,451	109,451

<https://www.twdb.texas.gov/waterplanning/data/projections/2027/projections.asp>



51

Agenda Item 4b

Consider requests for revisions and recommendations to RWPG, as needed



52

Agenda Item 5

Review schedule and consider plan for future meetings of Population and Demand Committee



53

Sixth Cycle of Regional Water Planning (2026 Regional Water Plans) Working Schedule (as of October 2021)¹

Texas Water Development Board

Item	Entity	Activity	Planning SOW Task # ²	2021	2022	2023	2024	2025
1	TWDB	RFA for regional water planning grant posted and applications due		1				
2	TWDB/RWPG	Initial planning contract execution deadline			1			
3	TWDB/RWPG	Anticipated additional contracting activities						
4	TWDB	Regional Water Planning rules update		1				
5	TWDB/REG	Mixing study	2A	1				
6	RWPG	RWPG 2021 pre-planning & coordination meeting (draft technical work begins)	10		1			
7	TWDB	Municipal WUG 104, GPCD, historical population, and water use released	2B	1				
8	RWPG	Review municipal WUG 104, GPCD, historical population, and water use; provide feedback to TWDB	2B		1			
9	TWDB	Draft Livestock, Manufacturing, and Steam Electric Power demand projections released	2A		1			
10	TWDB	Draft Irrigation and Mining projections released	2A		1			
11	TWDB	Draft Population and Municipal demand projections released	2B		1			
12	RWPG	Review draft projections and finalize adjustments with TWDB staff	2A, 2B		1			
13	TWDB	TWDB Board adopts projections	2A, 2B		1			
14	TWDB	2027 prepared for data entry ^{3,4}			1			
15	TWDB/RWPG	2027 individualized training for consultants			1			
16	TWDB	Updated MAGs released			1			
17	RWPG	Evaluate water availability and existing water supply			1			
18	RWPG	Identify water needs			1			
19	RWPG	Technical Memo due			1			
20	RWPG	Identify potentially feasible WUEs			1			
21	TWDB/RWPG	Review and negotiate SOW submissions for WUE evaluations and issue notice to proceed ⁵			1			
22	IPC	Interregional Planning Council report due to the TWDB			1			
23	RWPG	Initially Prepared Plan due			1			
24	TWDB	Socioeconomic Impact Report released to RWPG			1			
25	RWPG	Final Plan due			1			

Notes:
¹ Estimated timeline based on currently available agency resources and subject to change.
² Only tasks included in the initial contract scope of work have task numbers in this initial timeline.
³ 2027 is the updated, online water planning database for the 2027 State Water Plan.
⁴ Anticipated database availability dates are estimates based on currently available agency resources.
⁵ Subject to available funding.

https://www.twdb.texas.gov/waterplanning/rwp/planningdocu/2026/projectdocs/Working_Schedule_2026RWPs.pdf

54

