

DRAFT MINUTES

**Lower Colorado Regional Water Planning Group
Water Management Strategy Committee Meeting
November 15, 2023**

Freese and Nichols, 10431 Morado Circle, Building 5, Suite 300,
Conference Room "Capital of Texas", Austin, Texas 78759
2:00 P.M.

Meeting Minutes:

1. Call to Order, Introductions and Roll Call – Earl Foster, Acting Committee Chair

Meeting was called to order at 2:02 P.M. by Acting Chair Foster.

Attendance

Committee Members:

**Earl Foster, alternate for Small Municipalities
Teresa Lutes, Municipalities
David Lindsay, Recreation
Mike Reagor, Small Municipalities
Barbara Johnson, Industry
Christianne Castleberry, Water Utilities
Carol Olewin, Public Interest
Tom Hegemier, alternate for River Authority (Committee Member Monica Masters)
Daniel Berglund, Small Business**

Other attendees:

**Lann Bookout, TWDB
Sue Thornton, alternate for Recreation
Leonard Oliver, LCRA
Leslie Solo Sanchez, LCRA
Stacy Pandey, LCRA
Sara Eatman, Austin Water
Helen Gerlach, Austin Water
Jessica Taylor, STV Incorporated
Hollye Fain, Aqua WSC
Dacy Cameron, Aqua WSC**

Emily O’Leary, Aqua WSC
Cindy Smiley, CTWC
Adam Conner, FNI
Neil Deeds, INTERA
Cody McCann, Plummer

2. Welcome and Introductions – Acting Chair Foster

Attendees identified themselves and their affiliations.

3. Receive public comments on specific issues related to agenda items 4 through 5 - limited to 3 minutes per person.

No public comments were provided.

4. Assessment of possible infeasible strategies from the 2021 Region K plan

- Presentation of findings by consulting team

Neil Deeds of the consulting team led a discussion of the analysis of infeasible strategies from 2021 plan. He noted that both water management strategies (WMSs) and water management strategy projects (WMSPs) were analyzed. The consulting team’s findings were that no infeasible WMSs or WMSPs were present in the 2021 plan based on the analysis performed under the guidance provided by TWDB.

Some comments on particular projects were made by committee members who contributed to the analysis, and Neil noted the critical contributions from Daniel Berglund, LCRA staff, AW staff, and others.

- Possible action by committee to recommend findings be presented to the RWPG on December 1

Daniel Berglund made motion to recommend that these findings be presented to the Regional Water Planning Group on December 1. Christianne Castleberry seconded the motion.

A clarifying question was asked about whether this vote indicated the WMSCs confirmation of the findings or their recommendation that the findings be presented to the RWPG. It was confirmed that the latter was the case.

The motion passed unanimously.

5. Process for identifying feasible strategies for the 2026 Region K plan

- Presentation of proposed process for identifying feasible strategies for the 2026 planning cycle

Neil Deeds led a presentation of the proposed process for identifying feasible strategies in the 2026 planning cycle. One member asked if the process was the same as last planning cycle, Neil indicated that one additional step had been added based on feedback during the previous WMSC meeting. That additional step was rating the infeasibility of the strategy. This led to a discussion of this possible additional step. The discussion generally considered the practicality of making that evaluation as part of the selection process. One committee member suggested that this evaluation would be better suited for the discussion with project sponsors during the initial development of the strategy list. This idea was seen as favorable by several members.

The consultant team agreed to add the infeasibility discussion as part of the WMS survey process.

Acting Chair Foster asked that the process as presented be modified to remove the 5th bullet concerning infeasibility rankings, and the consulting team agreed to do so.

- Possible action by committee to recommend that the process be presented to the RWPG on December 1

Christianne moved to recommend that the process (as amended to remove the 5th bullet concerning infeasibility ranking) be presented to the RWPG on December 1 for consideration. Daniel seconded.

The motion passed unanimously.

6. Next meeting date

There was some discussion on whether a WMSC meeting was needed prior to the January 10 RWPG meeting. The consulting team noted that a scope and budget would be presented for approval, and that the WMSC might want to review prior to presenting to the larger group. The TWDB representative noted that specific strategies would not be presented for consideration, but rather groups of strategies, many of them carried forward from the previous plan, so there was limited opportunity for input. Several members agreed that it was likely unnecessary, but that a short meeting could occur just before the full RWPG meeting if necessary.

The consulting team noted that materials would be posted fairly early for the RWPG meeting due to the special requirements around that particular agenda item, so the WMSC would have time for review and to decide whether a short meeting would be required.

7. Future Agenda Items

Neil noted that approval of previous meeting minutes should be on the next agenda, since he left it off of this one.

8. Public comment

There was no public comment.

9. Adjournment

Acting Chair Foster adjourned the meeting at 3:02 P.M.

DRAFT

March 29, 2024

1:00 PM

Region K Water Management Strategy Committee Meeting



Agenda Item 5

Overview and discussion of potential conservation strategies



Demand Management Strategies



- Two Demand Management Strategies included in DB27:
 - Water Conservation
 - Drought Management
- Water Conservation applied as the first Municipal WMS
 - TWDB-approved $\text{GPCD}^* \times \text{Population} = \text{Total Demand} - \text{Supply} = \text{Need}$
 - Water Conservation reduction in GPCD
 - Revised $\text{GPCD} \times \text{Population} - \text{Supply} = \underline{\text{Remaining Need}}$
- Water Conservation also applied to Non-Municipal Demands

* Includes plumbing code conservation.

Demand Reduction in DB27 (Carried forward from 2022 plan)



- Water Cons. - 84 entities (WUGs/WWPs) identified
 - 15 Irrigation (9 - on-farm, 6 District operations)
 - 2 Mining Conservation (Bastrop & Burnet)
 - 65 Municipal WUGs + Austin + LCRA (Municipal/industrial)
- Drought Contingency - 66 Entities
 - 12 other regions (F, G, H)
 - 12 County Other
 - 4 Irrigation (Colorado, Wharton, Matagorda, Mills)
 - 38 – remaining municipal
- Deadline for Water Conservation Plan & Drought Contingency Plan submittal:
May 1, 2024
 - TWDB Financial Asst. > \$500,000; > 3,300 Connections; Surface Water Right

Agenda Item 6

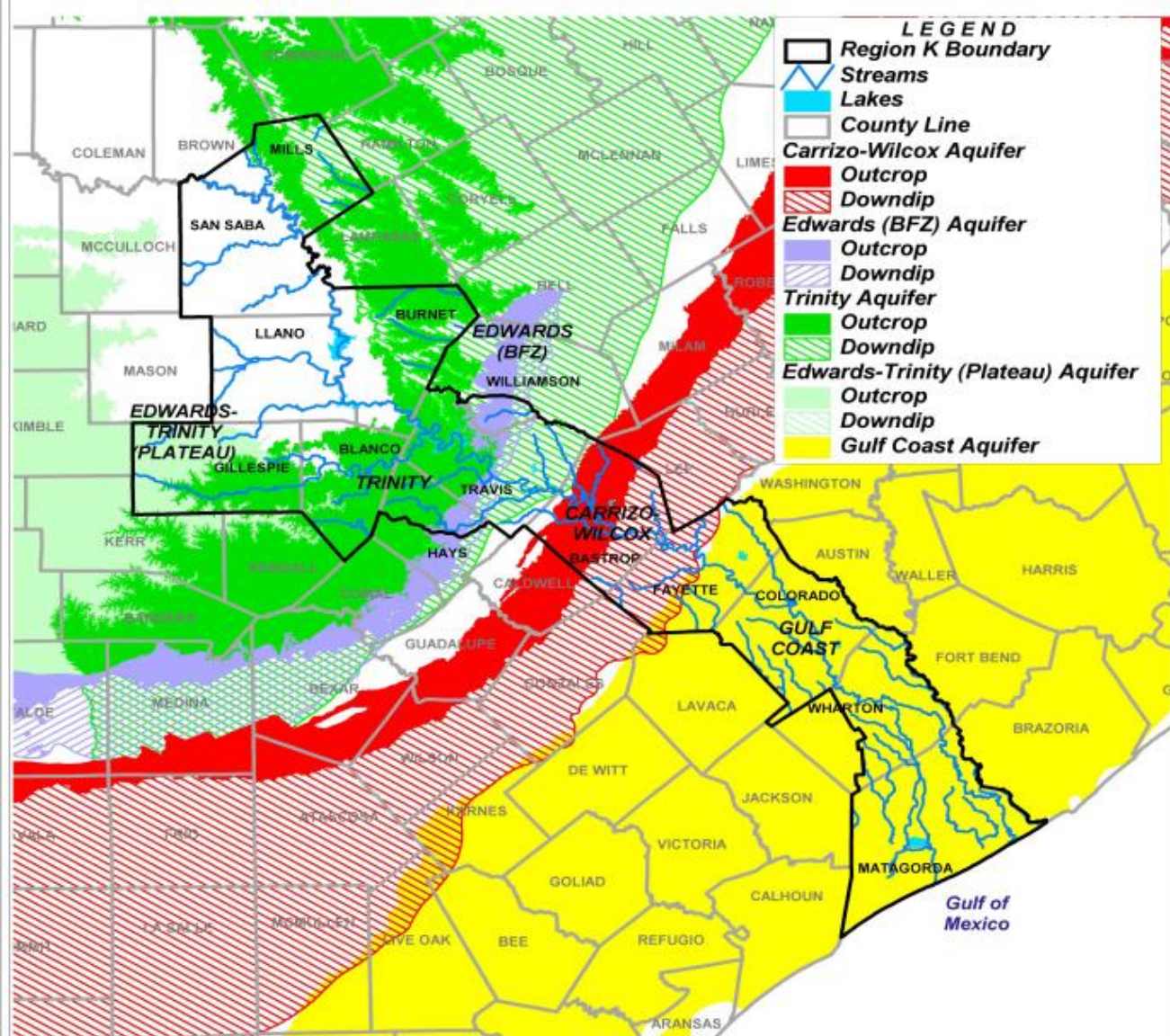
Overview and discussion of potential expansion of local groundwater strategies



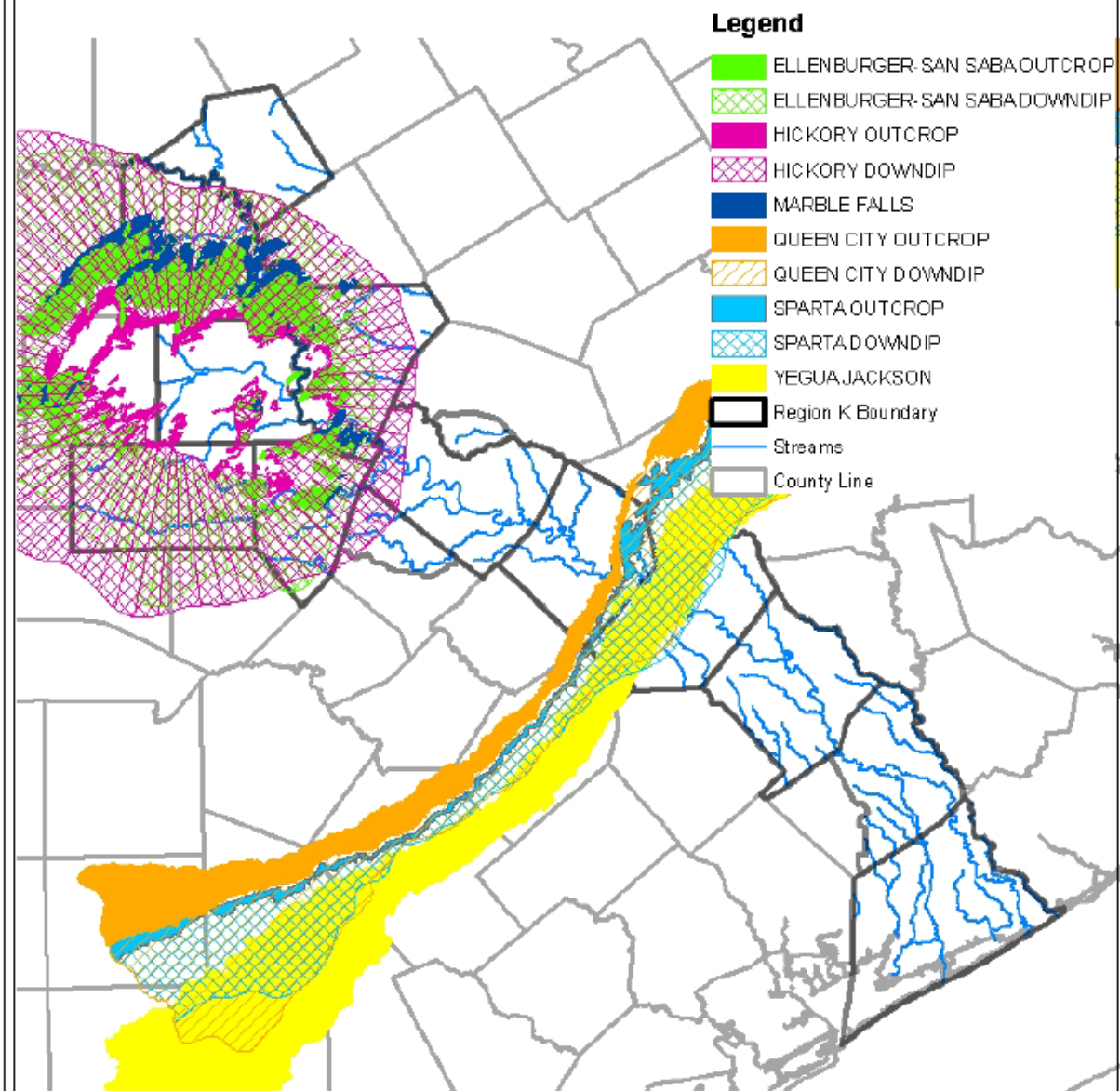
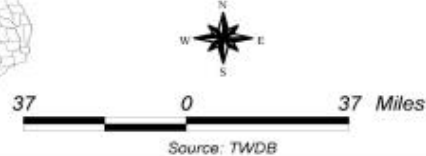
Expansion of Local Groundwater Supplies: Background



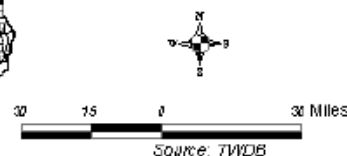
- Local Groundwater Supplies are generally those where the source is in the same county/basin as the demand, or nearby in an adjacent county
- Common strategy for some non-municipal WUGs, and many municipal utilities as well
 - Irrigation
 - Livestock
 - Mining
 - County-other
- Requires available groundwater source
 - Recall that groundwater sources are typically set by the Managed Available Groundwater (MAG)
 - Much of the MAG is already accounted for under existing supplies



Major Aquifers



Minor Aquifers



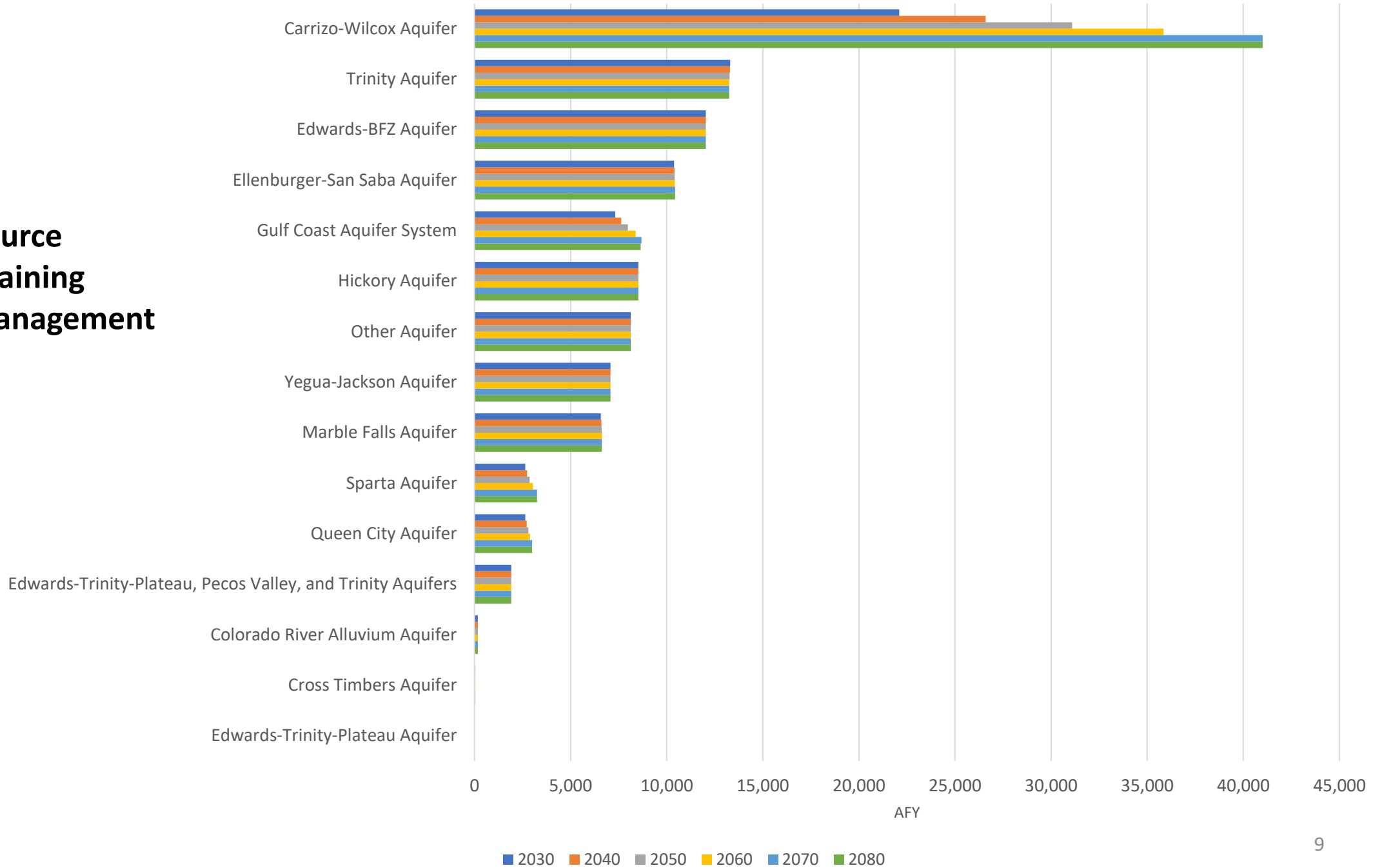
**Groundwater Source
Availability Remaining
before Water Management
Strategies**

By Aquifer

3							
4	Row Labels	2030	2040	2050	2060	2070	2080
5	Edwards-Trinity-Plateau Aquifer	-	-	-	-	-	-
6	Cross Timbers Aquifer	39	39	39	39	39	39
7	Colorado River Alluvium Aquifer	172	172	172	172	172	172
8	Edwards-Trinity-Plateau, Pecos Valley, and Trinity Aquifers	1,912	1,912	1,912	1,912	1,912	1,912
9	Queen City Aquifer	2,641	2,717	2,800	2,891	2,991	2,991
10	Sparta Aquifer	2,640	2,736	2,864	3,040	3,249	3,249
11	Marble Falls Aquifer	6,574	6,607	6,609	6,633	6,625	6,620
12	Yegua-Jackson Aquifer	7,077	7,077	7,076	7,076	7,076	7,076
13	Other Aquifer	8,125	8,125	8,125	8,125	8,125	8,125
14	Hickory Aquifer	8,523	8,524	8,523	8,524	8,523	8,524
15	Gulf Coast Aquifer System	7,319	7,634	7,982	8,383	8,683	8,639
16	Ellenburger-San Saba Aquifer	10,385	10,406	10,417	10,430	10,434	10,438
17	Edwards-BFZ Aquifer	12,034	12,037	12,037	12,037	12,037	12,037
18	Trinity Aquifer	13,304	13,292	13,277	13,247	13,247	13,247
19	Carrizo-Wilcox Aquifer	22,097	26,603	31,094	35,850	41,013	41,013
20	Grand Total	102,842	107,881	112,927	118,359	124,126	124,082

Groundwater Source Availability Remaining before Water Management Strategies

By Aquifer



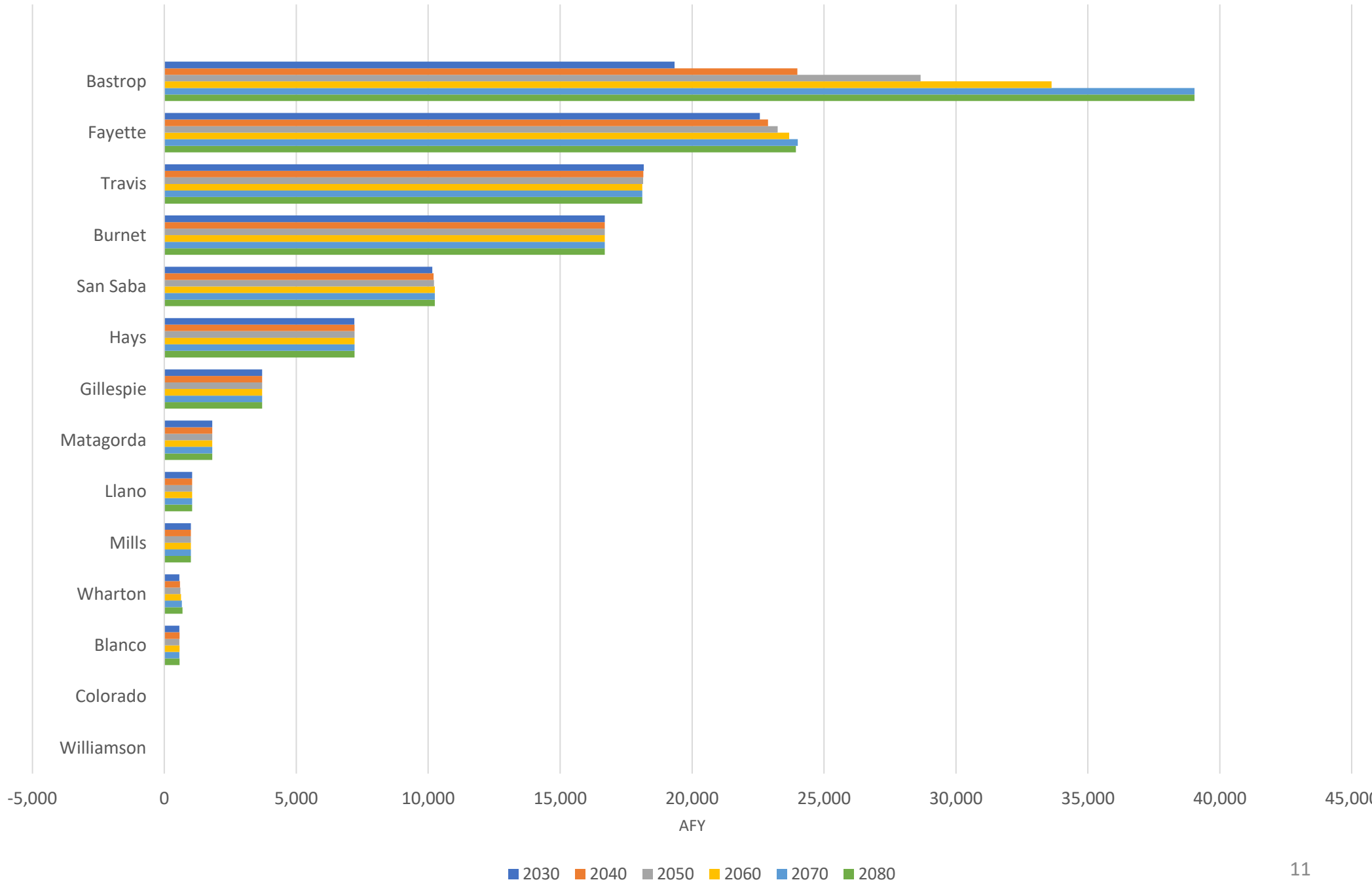
From manufacturing in Region G, requires further coordination

Groundwater Source
Availability Remaining
before Water Management
Strategies

By County

Row Labels	2030	2040	2050	2060	2070	2080
Williamson	(11)	(11)	(11)	(11)	(11)	(11)
Colorado	-	-	-	-	-	-
Blanco	572	576	572	576	572	576
Wharton	566	592	612	637	664	690
Mills	1,005	1,005	1,005	1,005	1,005	1,005
Llano	1,057	1,057	1,057	1,057	1,057	1,057
Matagorda	1,817	1,817	1,817	1,817	1,817	1,817
Gillespie	3,708	3,708	3,708	3,708	3,708	3,708
Hays	7,205	7,208	7,208	7,208	7,208	7,208
San Saba	10,154	10,205	10,221	10,255	10,254	10,250
Burnet	16,694	16,694	16,694	16,694	16,694	16,694
Travis	18,169	18,157	18,142	18,112	18,112	18,112
Fayette	22,566	22,881	23,245	23,678	24,003	23,933
Bastrop	19,340	23,992	28,657	33,623	39,043	39,043
Grand Total	102,842	107,881	112,927	118,359	124,126	124,082

Groundwater
Source Availability
Remaining
before Water
Management
Strategies
By County



Examples of non-municipal WUGs with needs

Row Labels	2030	2040	2050	2060	2070	2080
Irrigation, Matagorda	112,053	107,572	103,212	98,970	94,842	90,826
Irrigation, Wharton	111,008	105,574	100,288	95,144	90,138	85,269
Irrigation, Colorado	31,937	27,560	23,302	19,159	15,729	12,444
Irrigation, Mills	3,084	3,084	3,084	3,084	3,084	3,084
County-Other, Bastrop	-	-	1	165	1,101	2,538
Manufacturing, Matagorda	892	1,165	1,448	1,742	2,046	2,362
Mining, Williamson	-	277	596	984	1,368	1,724
Irrigation, San Saba	1,300	1,300	1,300	1,300	1,300	1,300
County-Other, Gillespie	79	198	330	523	746	999
Mining, Burnet	-	-	99	274	427	559
Mining, Bastrop	-	-	67	194	352	550
Mining, Hays	152	176	198	231	267	306
County-Other, Burnet	-	-	-	63	157	270
Manufacturing, Gillespie	56	70	85	100	116	133
Mining, Mills	104	107	111	116	120	126
Irrigation, Burnet	109	109	109	109	109	109
Irrigation, Gillespie	75	75	75	75	75	75
Manufacturing, Burnet	44	50	56	62	68	75

Municipal WUGs are being surveyed with respect to WMSs that they have planned, which may also include expanded use of groundwater